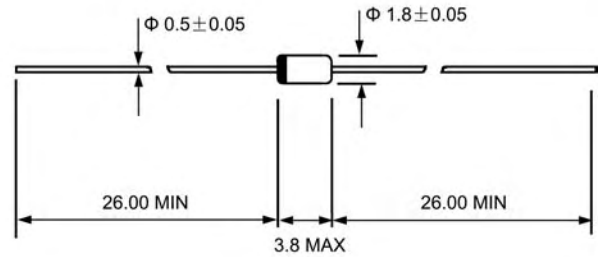




**REVERSE VOLTAGE: 250 V**  
**CURRENT: 0.2 A**  
**DO - 35(GLASS)**

## Features

- ◇ Glass sealed envelope. (MSD)
- ◇  $V_{RM}=250V$  guaranteed
- ◇ High reliability



Dimensions in millimeters

## Mechanical Data

- ◇ Case: DO-35,glass case
- ◇ Polarity: Color band denotes cathode
- ◇ Weight: 0.004 ounces, 0.13 grams

## MAXIMUM RATINGS AND ELECTRICAL CHARACTERISTICS

Ratings at 25°C ambient temperature unless otherwise specified.

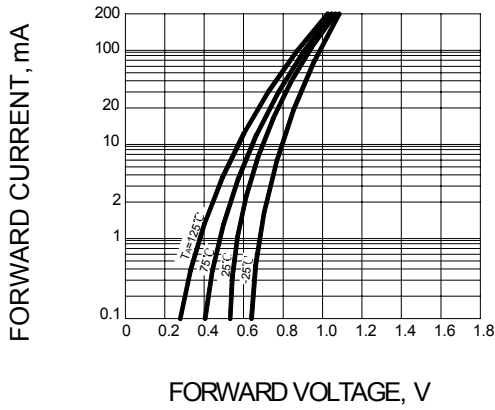
Single phase,half wave,50 Hz,resistive or inductive load. For capacitive load,derate by 20%.

		1SS245	UNITS
Maximum recurrent peak reverse voltage	$V_{RRM}$	250	V
Maximum DC blocking voltage	$V_{DC}$	220	V
Maximum average forward rectified current	$I_{F(AV)}$	0.2	A
Peak forward surge current 10ms single half-sine-wave superimposed on rated load	$I_{FSM}$	625.0	mA
Maximum instantaneous forward voltage@0.2 A	$V_F$	1.5	V
Maximum reverse current @ $V_R=220V$	$I_R$	10.0	$\mu A$
Capacitance between terminals @ $V_R=0V,f=1MHz$	$C_T$	3.0	pF
Power dissipation	$P_{tot}$	300	mW
Reverse recovery time $I_F=20mA,I_R=20mA,R_L=50$	$t_{rr}$	75	ns
Operating junction temperature range	$T_J$	- 55 ---- + 175	°C
Storage temperature range	$T_{STG}$	- 55 ---- + 175	°C

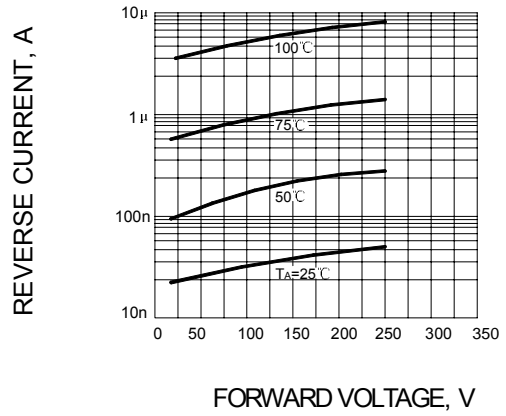


## Ratings AND Characteristic Curves

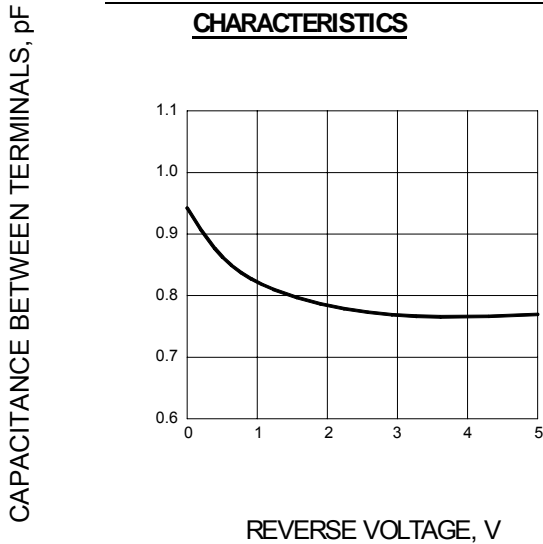
**FIG.1 – FORWARD CHARACTERISTICS**



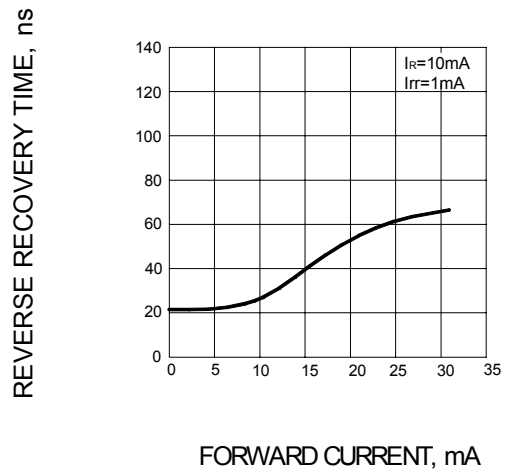
**FIG.2 – REVERSE CHARACTERISTICS**



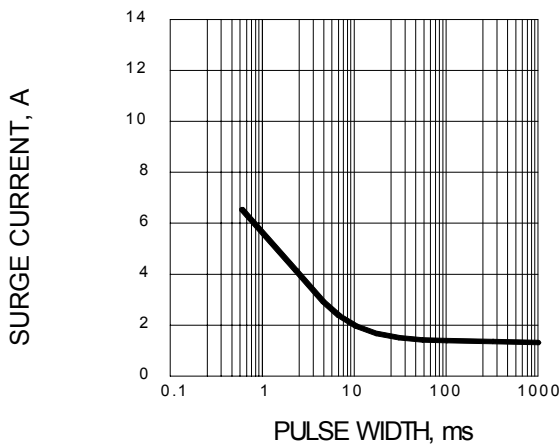
**FIG.3 – CAPACITANCE BETWEEN TERMINALS CHARACTERISTICS**



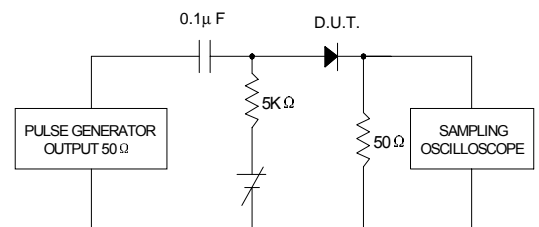
**FIG.4 – REVERSE RECOVERY TIME CHARACTERISTICS**



**FIG.5 – SURGE CURRENT CHARACTERISTICS**



**FIG.6 – REVERSE RECOVERY TIME (trr) MEASUREMENT CIRCUIT**



PACKAGE	SPQ/PCS	CARTON SPQ/PCS	CARTON SIZE/CM	CARTON GW/KG	CARTON NW/KG
DO-35	5000/AMMO	100000	41X28.5X38	14.57	13.07