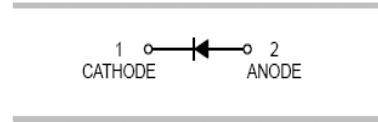




### FEATURES

- Small Surface Mounting Type
- High Speed  $t_{rr} = 4.0\text{ns(Typ)}$



### APPLICATIONS

- High speed switching



**SOD-323**

### ORDERING INFORMATION

Type No.	Marking	Package Code
MMDL914	5D	SOD-323

### MAXIMUM RATING @ $T_a=25^\circ\text{C}$ unless otherwise specified

Parameter	Symbol	Limits	Unit
Reverse Voltage	$V_R$	100	V
Forward Current	$I_F$	200	mA
Peak forward surge current	$I_{FM(surge)}$	500	mA
Power Dissipation	$P_D$	200	mW
Thermal resistance junction to ambient air	$R_{\theta JA}$	635	$^\circ\text{C/W}$
Thermal resistance junction to Lead	$R_{\theta JL}$	626	$^\circ\text{C/W}$
Thermal resistance junction to Case	$R_{\theta JC}$	356	$^\circ\text{C/W}$
Junction temperature	$T_J$	-55 to +150	$^\circ\text{C}$
Storage temperature	$T_{STG}$	-55 to +150	$^\circ\text{C}$


**ELECTRICAL CHARACTERISTICS @ Ta=25°C unless otherwise specified**

Parameter	Symbol	Min.	Typ.	Max.	Unit	Conditions
Reverse breakdown voltage	$V_{(BR)}$	100			V	$I_R=100\mu A$
Forward voltage	$V_F$			1.0	V	$I_F=10mA$
Reverse current	$I_R$			25 5.0	nA $\mu A$	$V_R=20V$ $V_R=75V$
Capacitance between terminals	$C_T$			4.0	pF	$V_R=0V, f=1.0MHz$
Reverse Recovery Time	$t_{rr}$			4	ns	$I_F=I_R=10mA$

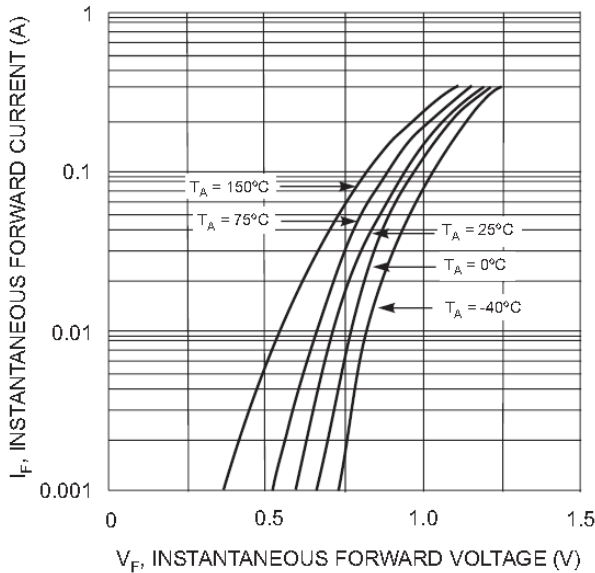
**TYPICAL CHARACTERISTICS @ Ta=25°C unless otherwise specified**


Fig. 1 Forward Characteristics

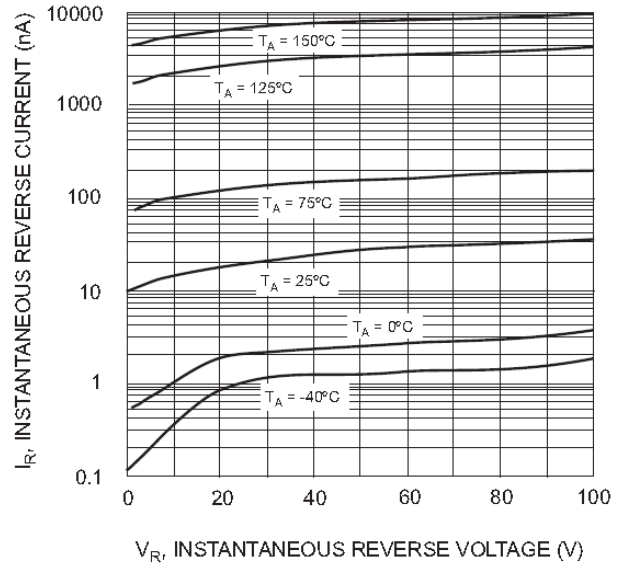


Fig. 2 Typical Reverse Characteristics

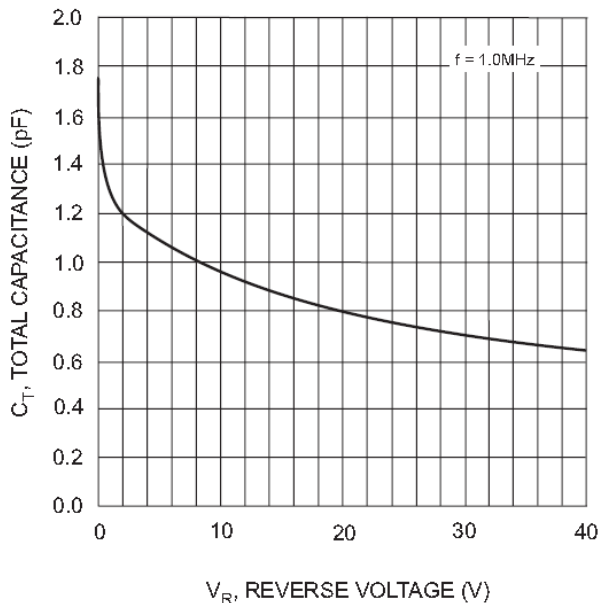
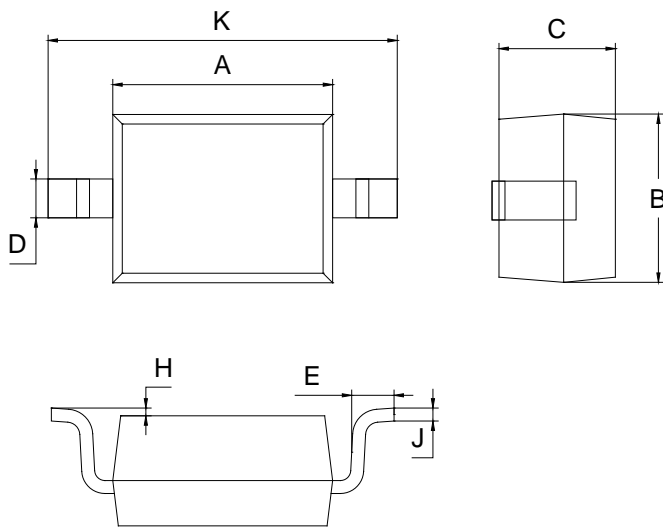


Fig. 3 Typical Capacitance vs. Reverse Voltage

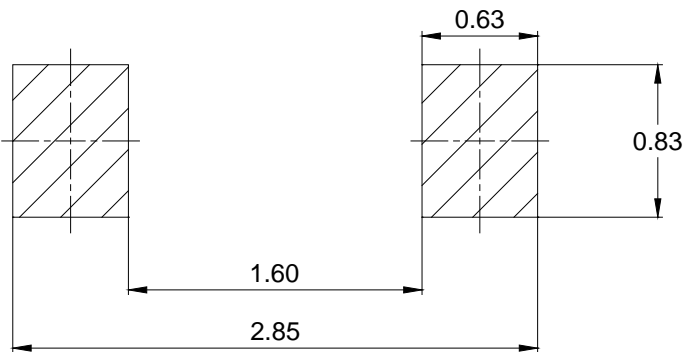
## PACKAGE OUTLINE

Plastic surface mounted package



SOD-323		
Dim	Min	Max
A	1.60	1.80
B	1.20	1.40
C	0.80	0.90
D	0.25	0.35
E	0.22	0.42
H	0.02	0.10
J	0.05	0.15
K	2.55	2.75
All Dimensions in mm		

## SOLDERING FOOTPRINT



Unit: mm

## PACKAGE INFORMATION

Device	Package	Shipping
MMDL914	SOD-323	3000 pcs / Tape & Reel