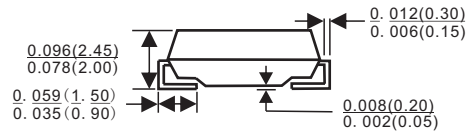
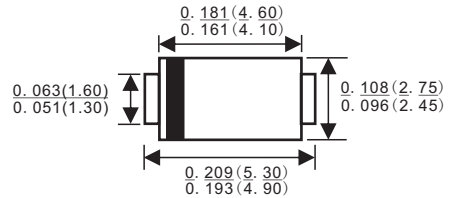




SMA/DO-214AC

Features

- ✦ Glass passivated junction chip
- ✦ For surface mounted application
- ✦ Low profile package
- ✦ Built-in strain relief
- ✦ Ideal for automated placement
- ✦ Easy pick and place
- ✦ Superfast recovery time for high efficiency
- ✦ Glass passivated chip junction
- ✦ High temperature soldering:
260°C/10 seconds at terminals
- ✦ Plastic material used carries Underwriters
Laboratory Classification 94V-0



Dimensions in inches and(millimeters)

Mechanical Data

- ✦ Cases: Molded plastic
- ✦ Terminals: Pure tin plated, lead free.
- ✦ Polarity: Indicated by cathode band
- ✦ Packing: 12mm tape
- ✦ Weight: 0.064 gram

Maximum Ratings and Electrical Characteristics

Rating at 25 °C ambient temperature unless otherwise specified.

Single phase, half wave, 60 Hz, resistive or inductive load.

For capacitive load, derate current by 20%

Parameter	Symbol	ES 2AA	ES 2BA	ES 2CA	ES 2DA	ES 2EA	ES 2GA	ES 2HA	ES 2JA	Units
Marking code		ES2A	ES2B	ES2C	ES2D	ES2E	ES2G	ES2H	ES2J	
Maximum Recurrent Peak Reverse Voltage	V_{RRM}	50	100	150	200	300	400	500	600	V
Maximum RMS Voltage	V_{RMS}	35	70	105	140	210	280	350	420	V
Maximum DC Blocking Voltage	V_{DC}	50	100	150	200	300	400	500	600	V
Maximum Average Forward Rectified Current See Fig. 1	$I_{(AV)}$	2.0								A
Peak Forward Surge Current, 8.3 ms Single Half Sine-wave Superimposed on Rated Load (JEDEC method)	I_{FSM}	50								A
Maximum Instantaneous Forward Voltage @ 2.0A	V_F	0.95			1.25		1.7			V
Maximum DC Reverse Current @ $T_A = 25^\circ\text{C}$ at Rated DC Blocking Voltage @ $T_A = 100^\circ\text{C}$	I_R					10				uA
						350				uA
Maximum Reverse Recovery Time (Note 1)	T_{rr}	35								nS
Typical Junction Capacitance (Note 2)	C_j	25				20				pF
Maximum Thermal Resistance (Note 3)	$R_{\theta JA}$ $R_{\theta JL}$					75				$^\circ\text{C} / \text{W}$
						20				
Operating Temperature Range	T_J	-55 to +150								$^\circ\text{C}$
Storage Temperature Range	T_{STG}	-55 to +150								$^\circ\text{C}$

- Notes:
1. Reverse Recovery Test Conditions: $I_F=0.5\text{A}$, $I_R=1.0\text{A}$, $I_{RR}=0.25\text{A}$
 2. Measured at 1 MHz and Applied $V_R=4.0$ Volts
 3. Units Mounted on P.C.B. 0.2" x 0.2" (5mm x 5mm) Pad Areas



RATINGS AND CHARACTERISTIC CURVES (ES2AA THRU ES2JA)

FIG.1- MAXIMUM FORWARD CURRENT DERATING CURVE

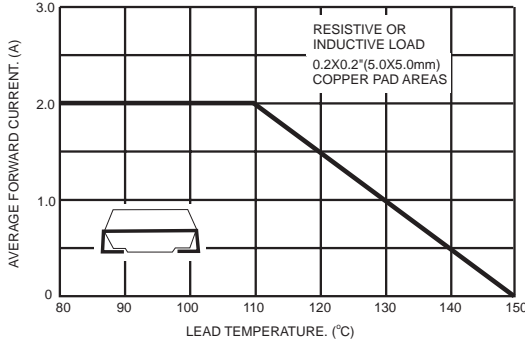


FIG.2- TYPICAL REVERSE CHARACTERISTICS

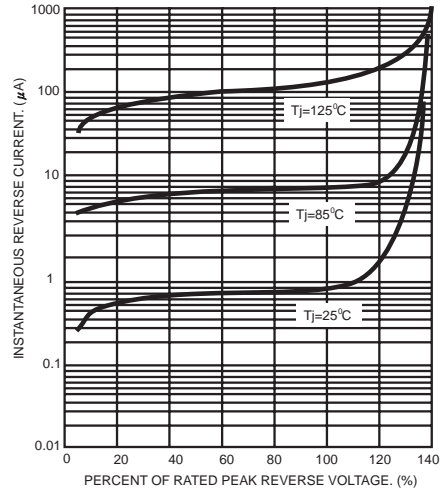


FIG.3- MAXIMUM NON-REPETITIVE PEAK FORWARD SURGE CURRENT

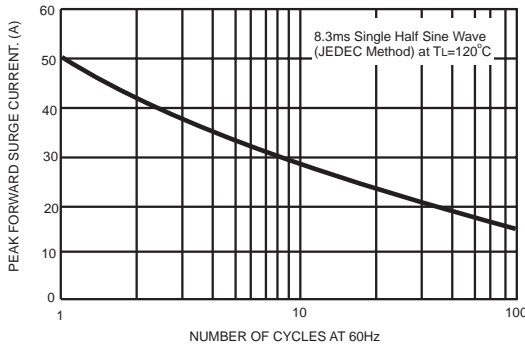


FIG.5- TYPICAL INSTANTANEOUS FORWARD CHARACTERISTICS

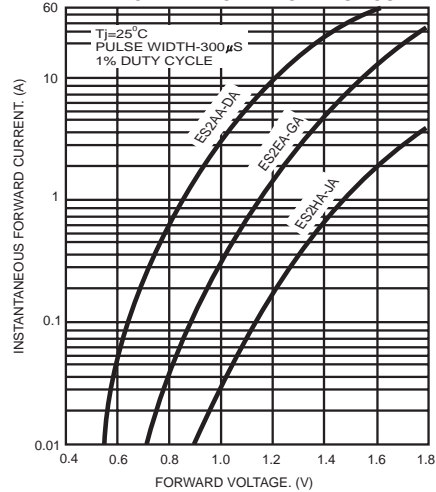


FIG.4- TYPICAL JUNCTION CAPACITANCE

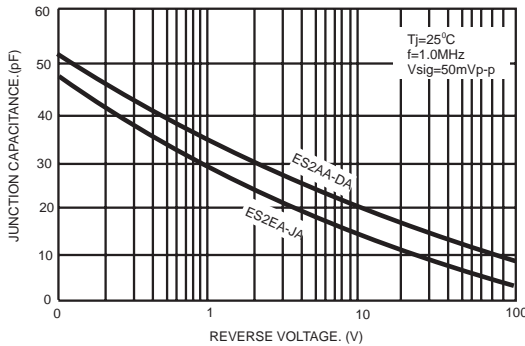
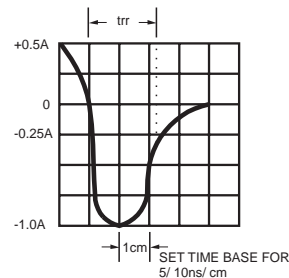
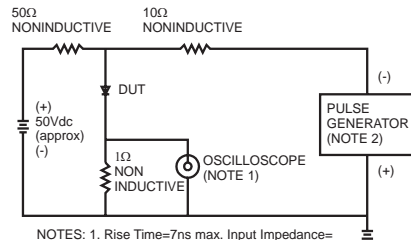


FIG.6- REVERSE RECOVERY TIME CHARACTERISTIC AND TEST CIRCUIT DIAGRAM



NOTES: 1. Rise Time=7ns max. Input Impedance=1 megohm 22pf
2. Rise Time=10ns max. Source Impedance=50 ohms