



VOLTAGE RANGE: 100 --- 600 V
FORWARD CURRENT: 3.0 A



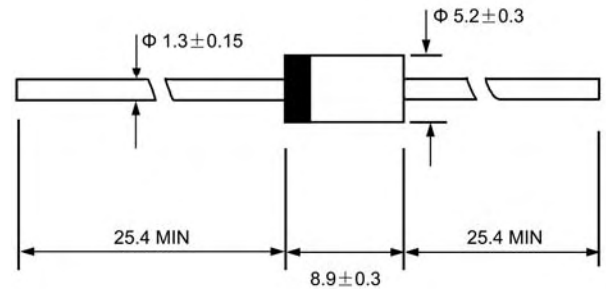
Features

- ◇ Low cost
- ◇ Low leakage
- ◇ Low forward voltage drop
- ◇ High current capability
- ◇ Easily cleaned with alcohol, Isopropanol and similar solvents
- ◇ The plastic material carries U/L recognition 94V-0

Mechanical Data

- ◇ Case: JEDEC DO-27, molded plastic
- ◇ Polarity: Color band denotes cathode
- ◇ Weight: 0.041 ounces, 1.15 grams
- ◇ Mounting position: Any

DO - 27



Dimensions in millimeters

MAXIMUM RATINGS AND ELECTRICAL CHARACTERISTICS

Ratings at 25°C ambient temperature unless otherwise specified.

Single phase, half wave, 60 Hz, resistive or inductive load. For capacitive load, derate by 20%.

Type Number	Symbol	ER301	ER302	ER303	ER304	ER306	UNITS
Maximum recurrent peak reverse voltage	V_{RRM}	100	200	300	400	600	V
Maximum RMS voltage	V_{RMS}	70	140	210	280	420	V
Maximum DC blocking voltage	V_{DC}	100	200	300	400	600	V
Maximum average forward rectified current 9.5mm lead length, @ $T_A=75^\circ C$	$I_{F(AV)}$	3.0					A
Peak forward surge current 8.3ms single half-sine-wave superimposed on rated load @ $T_J=125^\circ C$	I_{FSM}	150.0					A
Maximum instantaneous forward voltage @ 3.0A	V_F	0.95		1.25		1.7	V
Maximum reverse current @ $T_A=25^\circ C$ at rated DC blocking voltage @ $T_A=100^\circ C$	I_R			5.0		300.0	μA
Maximum reverse recovery time (Note 1)	t_{rr}			35			ns
Typical junction capacitance (Note 2)	C_J			95			pF
Typical thermal resistance (Note 3)	$R_{\theta JA}$			20			$^\circ C/W$
Operating junction temperature range	T_J			- 55 ----- + 150			$^\circ C$
Storage temperature range	T_{STG}			- 55 ----- + 150			$^\circ C$

NOTE: 1. Measured with $I_F=0.5A$, $I_R=1A$, $I_{rr}=0.25A$.

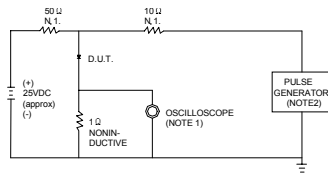
2. Measured at 1.0MHz and applied reverse voltage of 4.0V DC.

3. Thermal resistance junction to ambient.

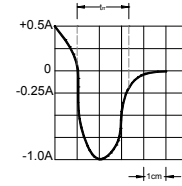


Ratings AND Characteristic Curves

FIG.1 – TEST CIRCUIT DIAGRAM AND REVERSE RECOVERY TIME CHARACTERISTIC



NOTES: 1. RISE TIME = 7ns MAX.INPUT IMPEDANCE = 1MΩ .22pF.
2. RISE TIME = 10ns MAX.SOURCE IMPEDANCE=50 Ω .



SET TIME BASE FOR 10 ns/cm

FIG.2 – TYPICAL FORWARD CHARACTERISTIC

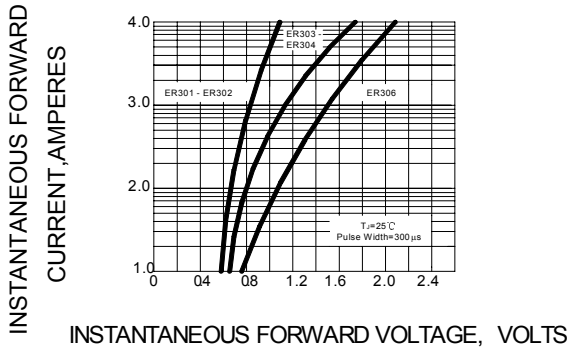


FIG.3 – FORWARD DERATING CURVE

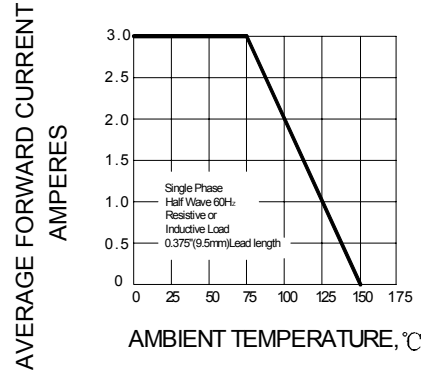


FIG.4 – TYPICAL JUNCTION CAPACITANCE

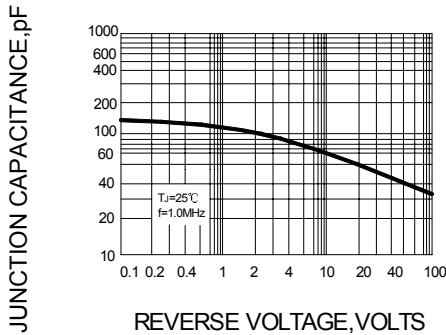


FIG.5 – PEAK FORWARD SURGE CURRENT

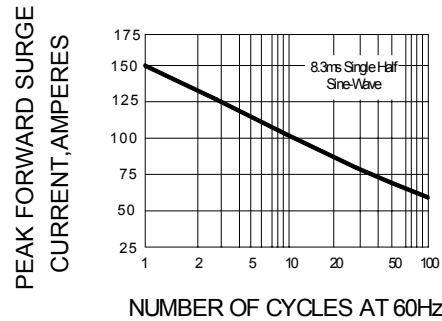
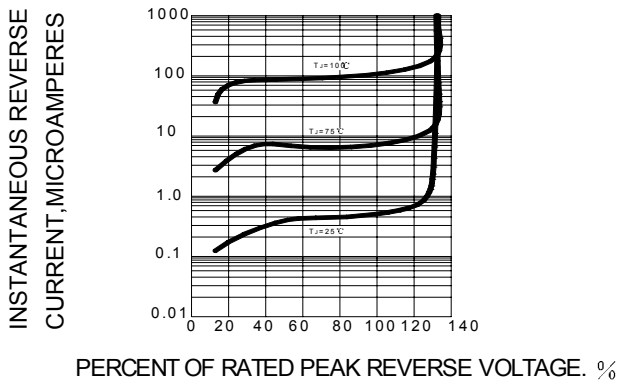


FIG.6 – TYPICAL REVERSE CHARACTERISTICS



PACKAGE	SPQ/PCS	CARTON SPQ/PCS	CARTON SIZE/CM	CARTON GW/KG	CARTON NW/KG
DO-27	1250/AMMO	12500	40X26.5X30	14.00	12.00