



VOLTAGE RANGE: 50-1000V
FORWARD CURRENT: 4.0A

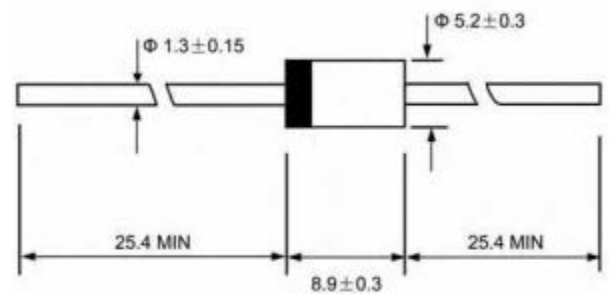
Features

- ◇ Low cost
- ◇ Low leakage
- ◇ Low forward voltage drop
- ◇ High current capability
- ◇ Easily cleaned with alcohol, Isopropanol and similar solvents
- ◇ The plastic material carries U/L recognition 94V-0

Mechanical Data

- ◇ Case: JEDEC DO-27 molded plastic
- ◇ Terminals: Axial lead, solderable per MIL-STD-202, Method 208
- ◇ Polarity: Color band denotes cathode
- ◇ Weight: 0.041 ounces, 1.15 grams
- ◇ Mounting position: Any

DO-27



Dimensions in inches and (millimeters)

MAXIMUM RATINGS AND ELECTRICAL CHARACTERISTICS

Ratings at 25°C ambient temperature unless otherwise specified.

Single phase, half wave, 60HZ, resistive or inductive load. For capacitive load, derate by 20%.

Type Number	Symbol	MUR	MUR	MUR	MUR	MUR	MUR	MUR	MUR	UNI
		405	410	415	420	440	460	480	4100	TS
Maximum Recurrent Peak Reverse Voltage	VRRM	50	100	150	200	400	600	800	1000	V
Maximum RMS Voltage	VRMS	35	70	105	140	280	420	560	700	V
Maximum DC Blocking Voltage	VDC	50	100	150	200	400	600	800	1000	V
Maximum average forward rectified Current 9.5mm lead length @TA=50°C	IF(AV)	4.0								A
Peak forward surge current: 8.3ms single half-sine-wave superimposed on rated load @TJ=125°C	IFSM	125								A
Maximum instantaneous Forward Voltage	VF	@TA=25°C@4.0A	0.89		1.28		1.75		V	
		@TA=150°C@3.0A	0.70		1.10		1.50			
Maximum Reverse Current at rated DC Blocking Voltage	IR	@TA=25°C	5							µA
		@TA=150°C	150							µA
Maximum reverse recovery time (Note1)	Trr	25		50		70		ns		
Controlled Avalanche Energy (See Test Circuit in Figure 6)	WAVAL	20								mJ
Typical junction capacitance (Note2)	Cj	70								PF
Typical thermal resistance (Note3)	RθJA	20								°C/W
Operating junction temperature range	TJ	-65 to +175								°C
Storage temperature range	TSTG	-65 to +175								°C

Note: 1. Measured with IF=0.5A, IR=1A, Irr=0.25A .

2. Measured at 1.0MHz and applied reverse voltage of 4.0V DC .

3. Thermal resistance from junction to ambient.



FIG.1: Io-Ta Curve

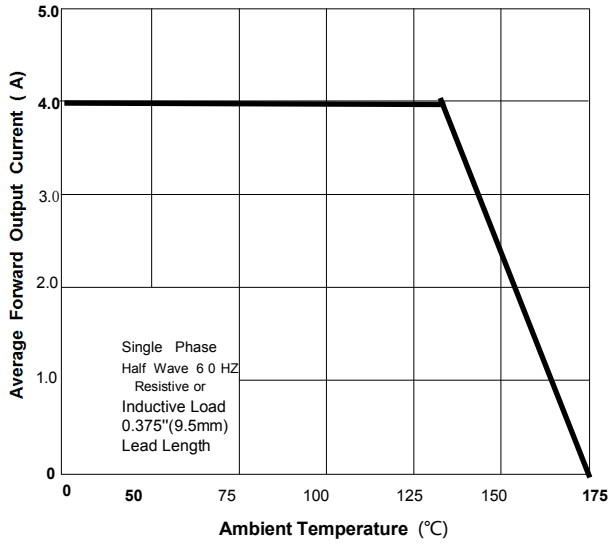


FIG.2: Forward Surge Current Capability

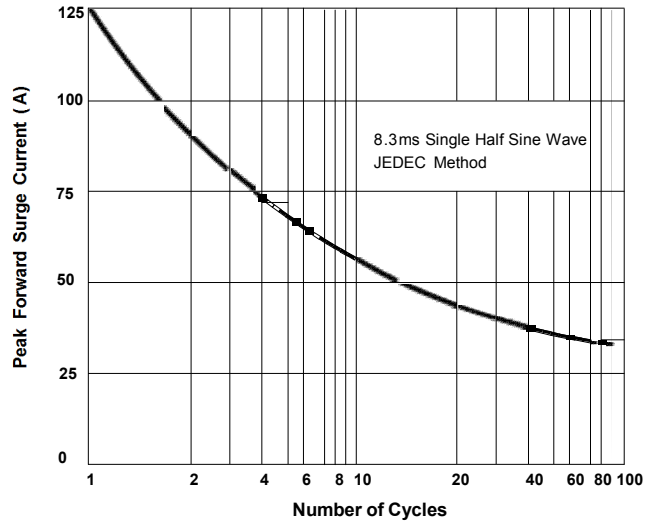


FIG.3: Forward Voltage

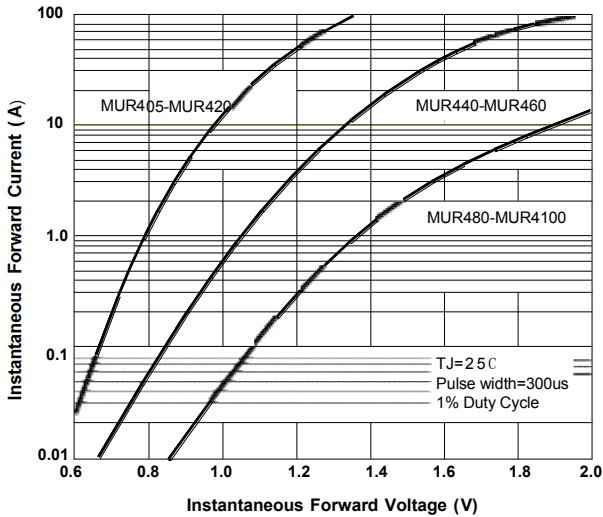


FIG.4: Typical Reverse Characteristics

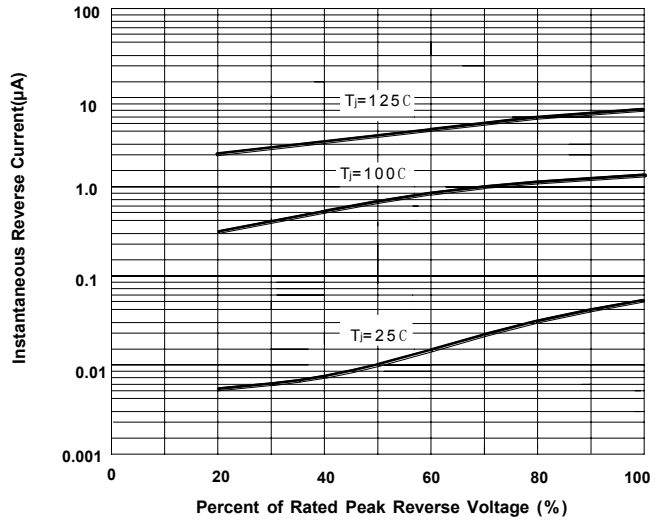
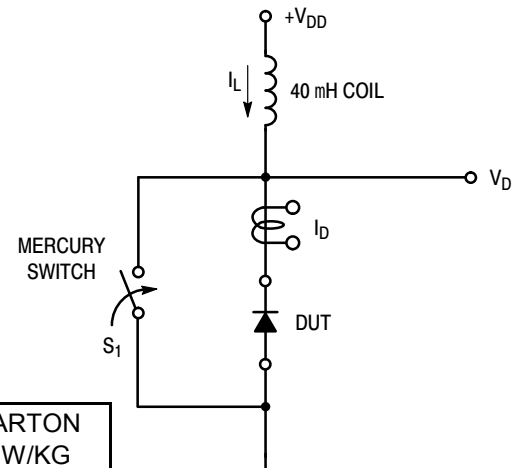
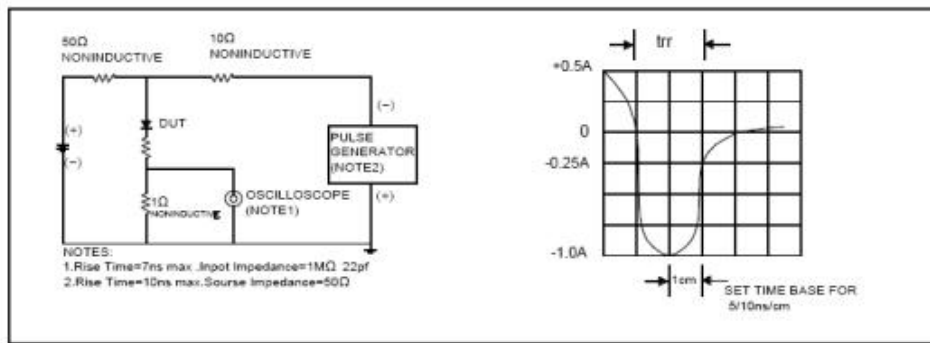


Figure 6. Test Circuit

FIG.5: Diagram of circuit and Testing wave form of reverse recovery time



PACKAGE	SPQ/PCS	CARTON SPQ/PCS	CARTON SIZE/CM	CARTON GW/KG	CARTON NW/KG
DO-27	1250/AMMO	12500	40X26.5X30	14.00	12.00