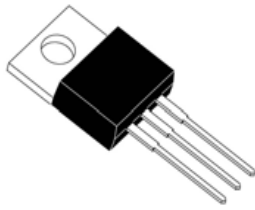




LGE



USF1610C-USF1660C

Super Fast Rectifiers



VOLTAGE RANGE: 100 --- 600 V

FORWARD CURRENT: 16 A

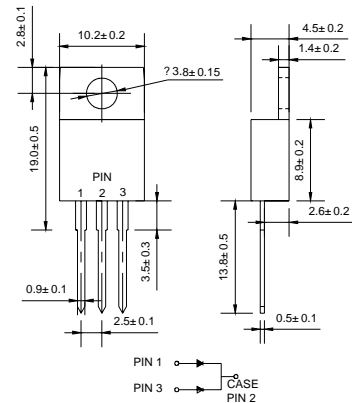
TO-220AB

Features

- ◇ Low cost
- ◇ Low leakage
- ◇ Low forward voltage drop
- ◇ High current capability
- ◇ Easily cleaned with alcohol, Isopropanol and similar solvents
- ◇ The plastic material carries U/L recognition 94V-0

Mechanical Data

- ◇ Case: JEDEC TO-220AB, molded plastic
- ◇ Polarity: As marked
- ◇ Weight: 0.071 ounce, 2.006 grams
- ◇ Mounting position: Any



Dimensions in millimeters

MAXIMUM RATINGS AND ELECTRICAL CHARACTERISTICS

Ratings at 25 °C ambient temperature unless otherwise specified.

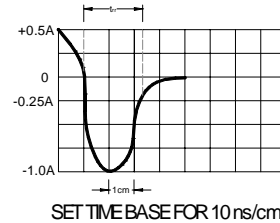
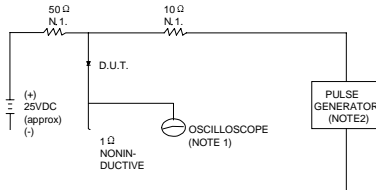
Single phase, half wave, 60 Hz, resistive or inductive load. For capacitive load, derate by 20%.

Type Number	Symbol	USF 1610C	USF 1620C	USF 1630C	USF 1640C	USF 1650C	USF 1660C	UNITS
Maximum recurrent peak reverse voltage	V_{RRM}	100	200	300	400	500	600	V
Maximum RMS voltage	V_{RMS}	70	140	210	280	350	420	V
Maximum DC blocking voltage	V_{DC}	100	200	300	400	500	600	V
Maximum average forward rectified current @ $T_C=100^\circ C$	$I_{F(AV)}$	16						A
Peak forward surge current 8.3ms single half-sine-wave superimposed on rated load @ $T_J=125^\circ C$	I_{FSM}	125						A
Maximum instantaneous forward voltage @ 8.0A	V_F	0.98		1.3		1.7		V
Maximum reverse current @ $T_A=25^\circ C$ at rated DC blocking voltage @ $T_A=150^\circ C$	I_R	5.0		10		500		μA
Maximum reverse recovery time (Note1)	t_{rr}	25						ns
Operating junction temperature range	T_J	- 55 ----- + 150						$^\circ C$
Storage temperature range	T_{STG}	- 55 ----- + 150						$^\circ C$

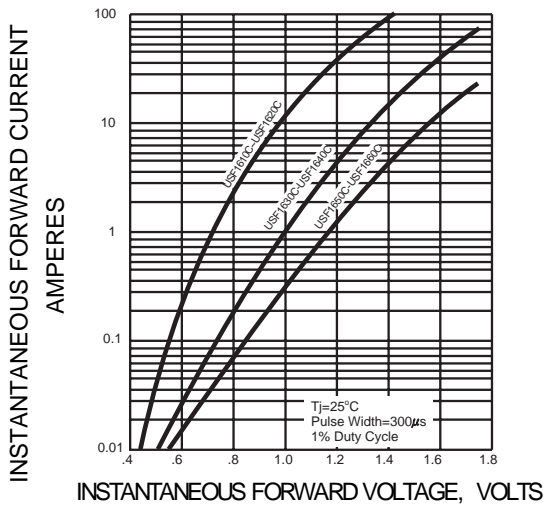
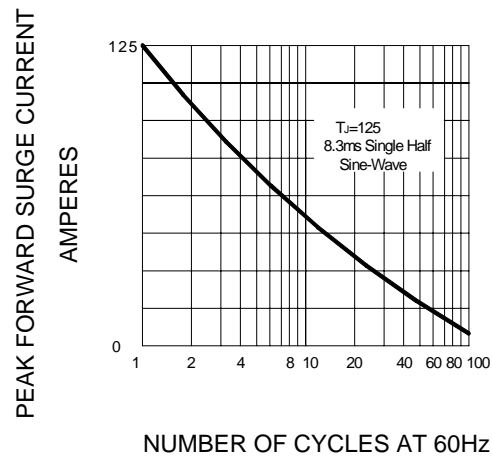
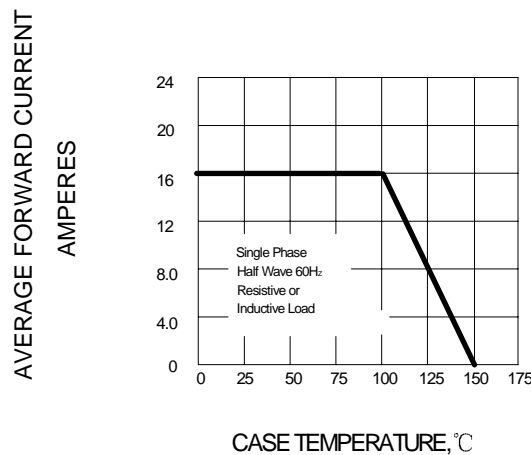
NOTE: 1. Measured with $I_F=0.5A$, $I_R=1A$, $t_{rr}=0.25A$.



Ratings AND Characteristic Curves

FIG.1 – TEST CIRCUIT DIAGRAM AND REVERSE RECOVERY TIME CHARACTERISTIC


NOTES:1.RISE TIME = 7ns MAX.INPUT IMPEDANCE =1MΩ. 22pF.
2.RISE TIME =10ns MAX.SOURCE IMPEDANCE=50 Ω.

FIG.2 – TYPICAL FORWARD CHARACTERISTIC

FIG.3 – PEAK FORWARD SURGE CURRENT

FIG.4-FORWARD DERATING CURVE


PACKAGE	PCS/TUBE	CARTON	CARTON	CARTON	CARTON
TO-220	50	5000	57*22*18	13	NW/KG 9