



REVERSE VOLTAGE : 90 V
CURRENT: 130 mA

DO - 35(GLASS)

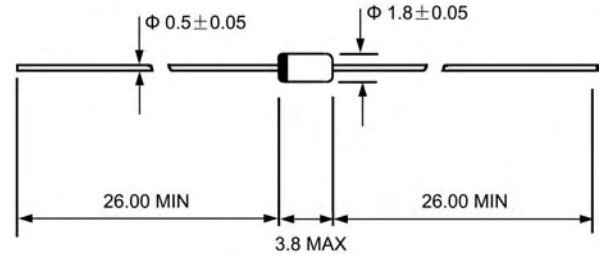


Features

- ◇ Glass sealed envelope. (MSD)
- ◇ High reliability

Mechanical Data

- ◇ Case: DO-35, glass case
- ◇ Polarity: Color band denotes cathode
- ◇ Weight: 0.005 ounces, 0.14 grams



Dimensions in millimeters

MAXIMUM RATINGS AND ELECTRICAL CHARACTERISTICS

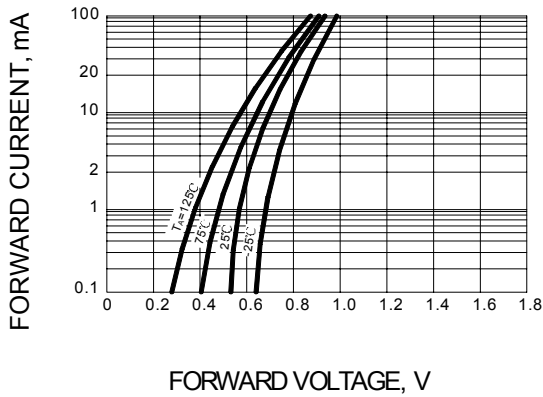
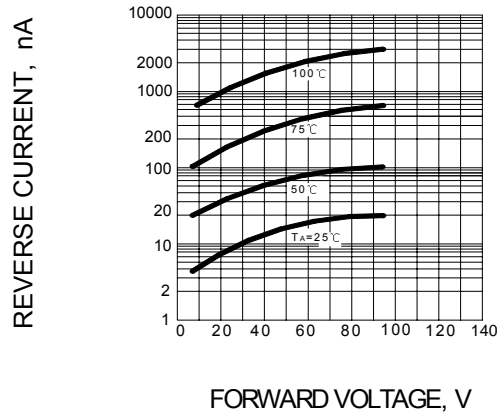
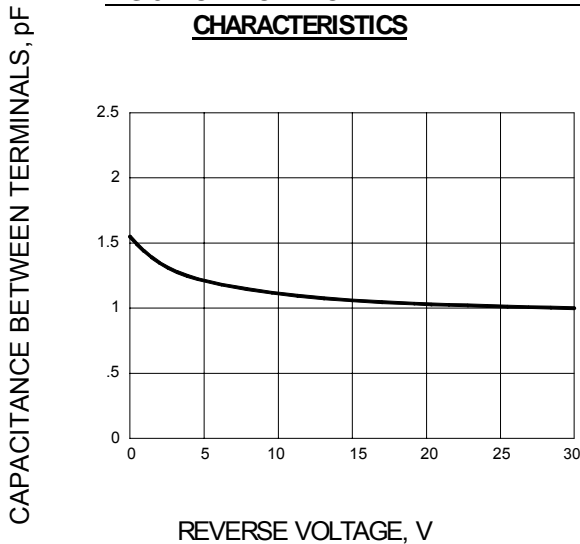
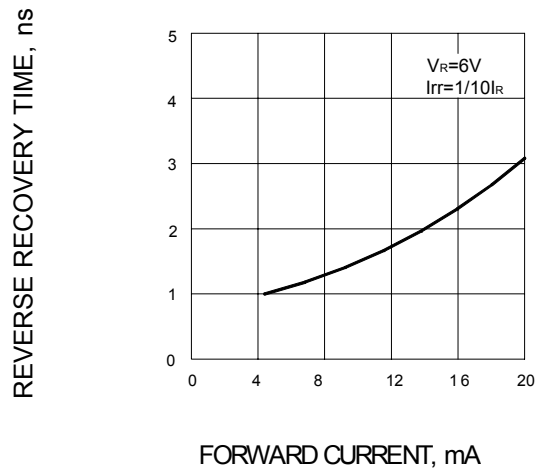
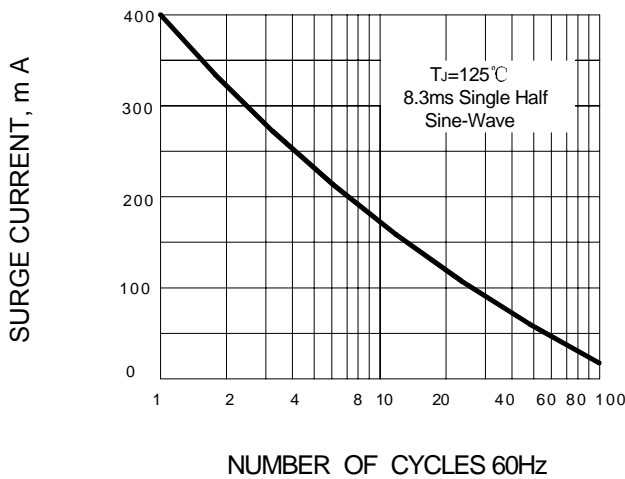
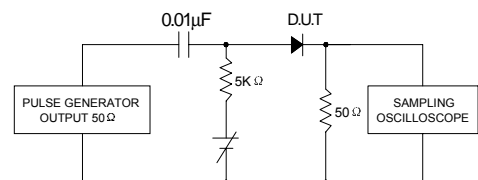
Ratings at 25°C ambient temperature unless otherwise specified.

Single phase, half wave, 60 Hz, resistive or inductive load. For capacitive load, derate by 20%.

		1SS133	UNITS
Maximum DC reverse voltage	V_R	80	V
Maximum recurrent reverse voltage	V_{RM}	90	V
Power dissipation	P_{tot}	300	mW
Maximum average forward rectified current	$I_{F(AV)}$	130	mA
Peak forward surge current 8.3ms single half-sine-wave superimposed on rated load	I_{FSM}	400	mA
Maximum instantaneous forward voltage @ 100mA	V_F	1.2	V
Maximum reverse current @ $T_A=25^\circ C$ at rated DC blocking voltage @ $T_A=150^\circ C$	I_R	0.5 50.0	μA
Reverse recovery time @ $I_F=10mA, V_R=6V, R_L=50$	t_{rr}	4.0	ns
Operating junction temperature range	T_J	- 55 ---- + 175	$^\circ C$
Storage temperature range	T_{STG}	- 55 ---- + 175	$^\circ C$



Ratings AND Characteristic Curves

FIG.1 – FORWARD CHARACTERISTICS

FIG.2 – REVERSE CHARACTERISTICS

FIG.3 – CAPACITANCE BETWEEN TERMINALS CHARACTERISTICS

FIG.4 – REVERSE RECOVERY TIME CHARACTERISTICS

FIG.5 – SURGE CURRENT CHARACTERISTICS

FIG.6 – REVERSE RECOVERY TIME (trr) MEASUREMENT CIRCUIT


PACKAGE	SPQ/PCS	CARTON SPQ/PCS	CARTON SIZE/CM	CARTON GW/KG	CARTON NW/KG
DO-35	5000/AMMO	100000	41X28.5X38	14.57	13.07