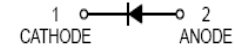




FEATURES

- Small surface mounting type
- High speed
- Suitable for high packing density

HF



APPLICATIONS

- High speed switching

SOD-323

ORDERING INFORMATION

Type No.	Marking	Package Code
1SS380	6D	SOD-323

MAXIMUM RATING @ Ta=25°C unless otherwise specified

Parameter	Symbol	Limits	Unit
Peak reverse voltage	V_{RM}	40	V
DC Reverse Voltage	V_R	35	V
Peak forward Current	I_{FSM}	225	mA
Average Rectified Output Current	I_o	100	mA
Surge current(1s)	I_{surge}	400	mA
Power Dissipation	P_D	200	mW
Junction temperature	T_j	125	°C
Storage temperature	T_{STG}	-55 to+125	°C

ELECTRICAL CHARACTERISTICS @ Ta=25°C unless otherwise specified

Parameter	Symbol	Min.	Typ.	Max.	Unit	Conditions
Forward voltage	V_F			1.2	V	$I_F=100mA$
Reverse current	I_R			10	nA	$V_R=20V$
Capacitance between terminals	C_T			5	pF	$V_R=0.5V, f=1MHz$

TYPICAL CHARACTERISTICS @ $T_a=25^\circ\text{C}$ unless otherwise specified

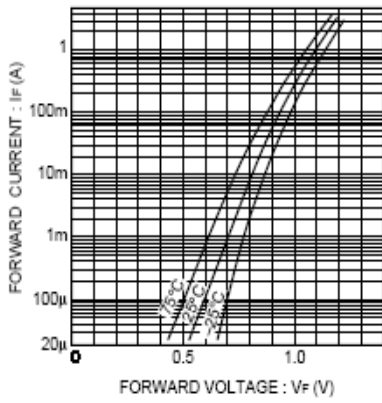


Fig. 1 Forward characteristics

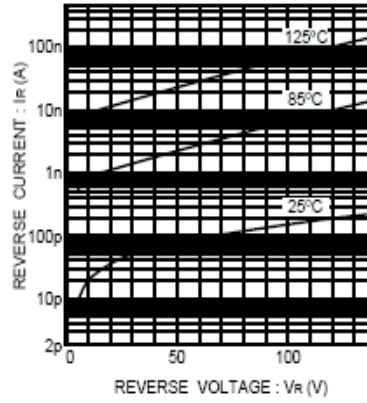


Fig. 2 Reverse characteristics

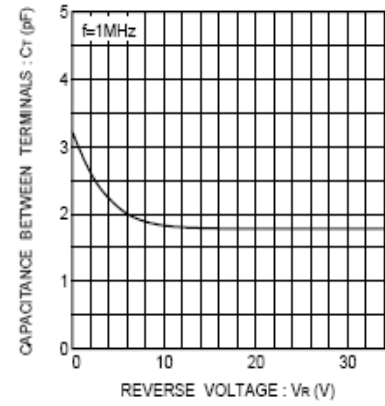


Fig. 3 Capacitance between terminals characteristics

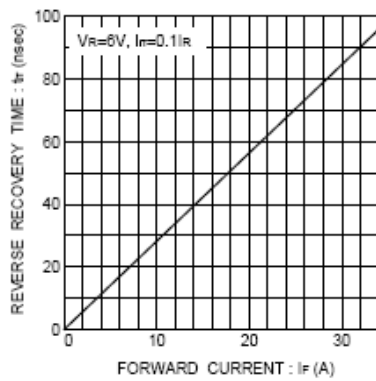


Fig. 4 Reverse recovery time characteristics

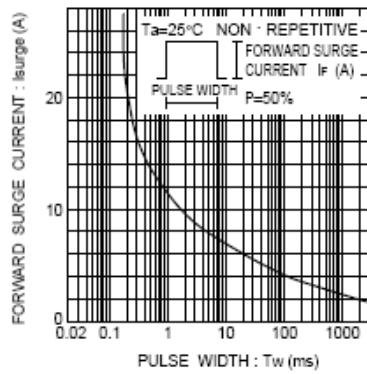


Fig. 5 Surge current characteristics

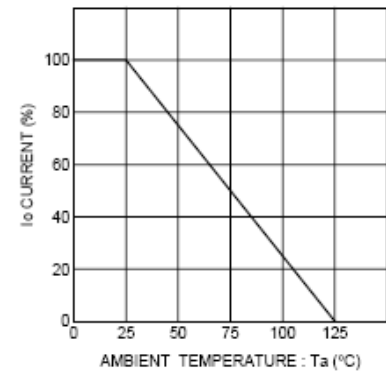
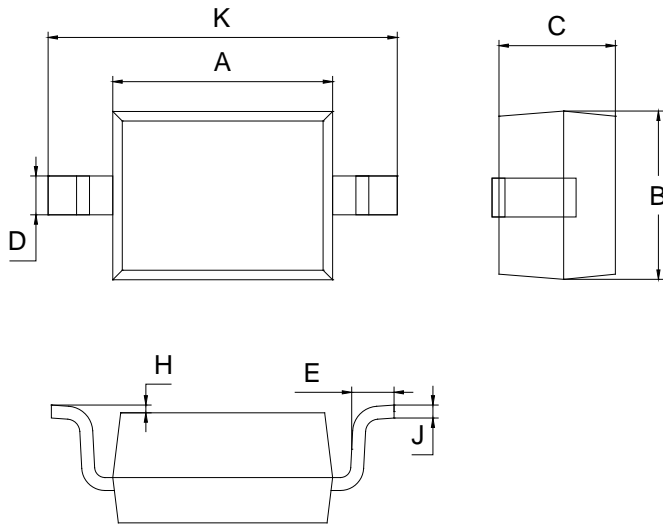


Fig. 6 Derating curve (mounting on glass epoxy PCBs)

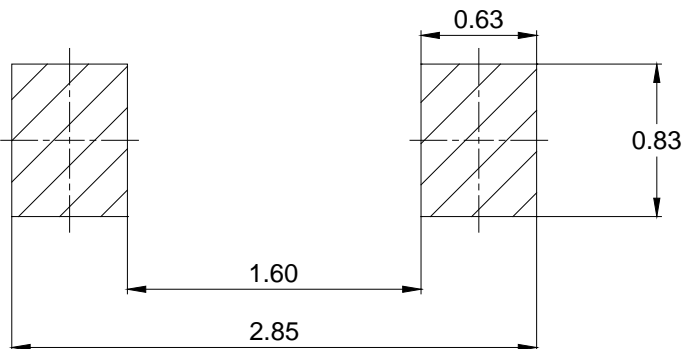
PACKAGE OUTLINE

Plastic surface mounted package



SOD-323		
Dim	Min	Max
A	1.60	1.80
B	1.20	1.40
C	0.80	0.90
D	0.25	0.35
E	0.22	0.42
H	0.02	0.10
J	0.05	0.15
K	2.55	2.75
All Dimensions in mm		

SOLDERING FOOTPRINT



Unit: mm

PACKAGE INFORMATION

Device	Package	Shipping
1SS380	SOD-323	3000pcs / Tape & Reel