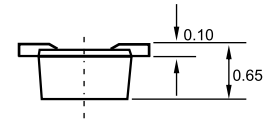
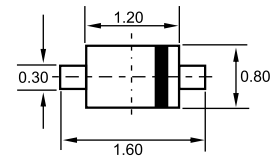


### SOD-523



Dimensions in inches and (millimeters)

### Features

- ✧ Low forward voltage.
- ✧ Fast reverse recovery time.
- ✧ Small total capacitance.

### Applications

- ✧ High-speed switching in surface mounted circuits.

### Ordering Information

Type No.	Marking	Package Code
1SS387	G	SOD-523

### MAXIMUM RATING @ Ta=25°C unless otherwise specified

Parameter	Symbol	Limits	Unit
Repetitive peak reverse voltage	$V_{RRM}$	85	V
Reverse voltage	$V_R$	80	V
Continuous forward current	$I_F$	100	mA
Surge current	$I_{FSM}$	1	A
Total power dissipation	$P_{tot}$	150	mW
Junction temperature	$T_j$	125	°C
Storage temperature	$T_{stg}$	-55-125	°C

### ELECTRICAL CHARACTERISTICS @ Ta=25°C unless otherwise specified

Parameter	Symbol	Min.	Typ.	Max.	Unit	Conditions
Forward voltage	$V_F$		0.62		V	$I_F=1mA$
			0.75		V	$I_F=10mA$
			0.98	1.2	V	$I_F=100mA$
Reverse current	$I_R$			0.1	$\mu A$	$V_R=30V$
				0.5	$\mu A$	$V_R=80V$
Diode capacitance	$C_d$		0.5	3	pF	$V_R=0, f=1MHz$
Reverse recovery time	$t_{rr}$		1.6	4	ns	$I_F=10mA$



TYPICAL CHARACTERISTICS @ Ta=25°C unless otherwise specified

