

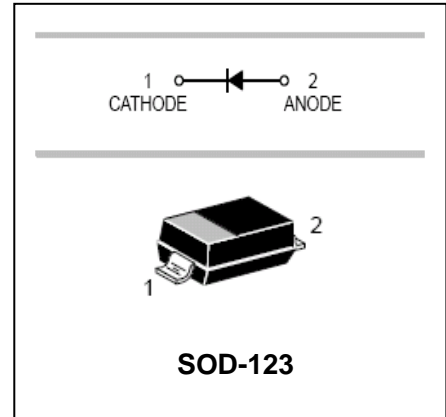
## Surface mount switching diode

## BAV19W/BAV20W

### FEATURES

- Fast Switching Speed.
- Surface Mount Package Ideally Suited For Automatic Insertion.
- For General Purpose Switching Applications.
- MSL 1

HF



### APPLICATIONS

- Surface mount fast switching diode.

### ORDERING INFORMATION

Type No.	Marking	Package Code
BAV19W	A8	SOD-123
BAV20W	T2	SOD-123

### MAXIMUM RATING @ Ta=25°C unless otherwise specified

Characteristic	Symbol	BAV19W	BAV20W	Unit
Non-Repetitive Peak Reverse Voltage	$V_{RM}$	120	200	V
Peak Repetitive Reverse Voltage	$V_{RRM}$			
Working Peak Reverse Voltage	$V_{RWM}$	100	150	V
DC Reverse Voltage	$V_R$			
RMS Reverse Voltage	$V_{R(RMS)}$	71	106	V
Average Rectified Output Current	$I_o$	200		mA
Non-Repetitive Peak Forward Surge Current @t=1.0 us	$I_{FSM}$	2.5		A
@t=1.0 s		0.5		
Power Dissipation	$P_d$	250		mW
Thermal Resistance Junction to Ambient Air	$R_{\theta JA}$	500		°C/W
Operating and Storage Temperature Range	$T_J, T_{STG}$	-65 to +150		°C

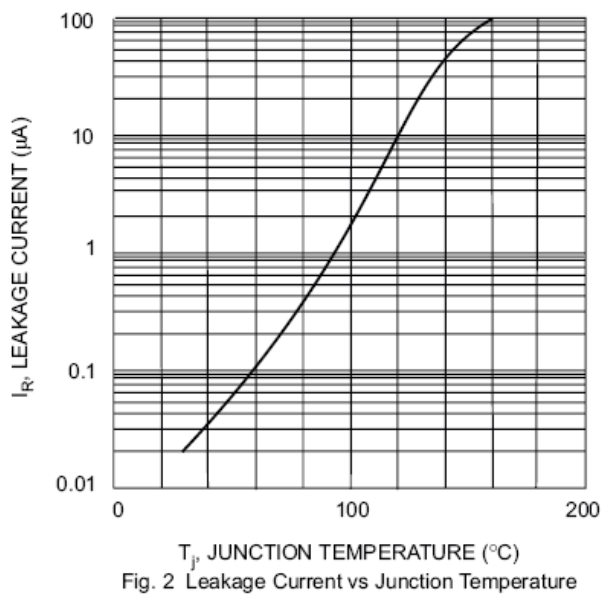
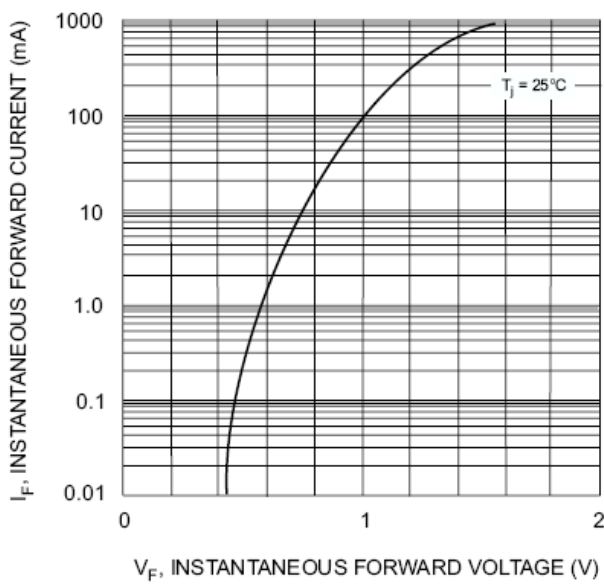
Surface mount switching diode

**BAV19W/BAV20W**

ELECTRICAL CHARACTERISTICS @ Ta=25°C unless otherwise specified

Characteristic	Symbol	Min	Max	Unit	Test Condition
Reverse Breakdown Voltage BAV19W BAV20W	$V_{(BR)R}$	120 200		V	$I_R=100\mu A$
Maximum Forward Voltage	$V_{F1}$ $V_{F2}$	-	1.0 1.25	V	$I_F=100mA$ $I_F=200mA$
Reverse Current BAV19W BAV20W	$I_R$	-	0.1	$\mu A$	$V_R=100V$ $V_R=150V$
Junction Capacitance	$C_j$	-	5.0	pF	$V_R=0, f=1.0MHz$
Reverse Recovery Time	$t_{rr}$	-	50	ns	$I_F=I_R=30mA,$ $I_{rr}=0.1 \times I_R, R_L=100\Omega$

TYPICAL CHARACTERISTICS @ Ta=25°C unless otherwise specified



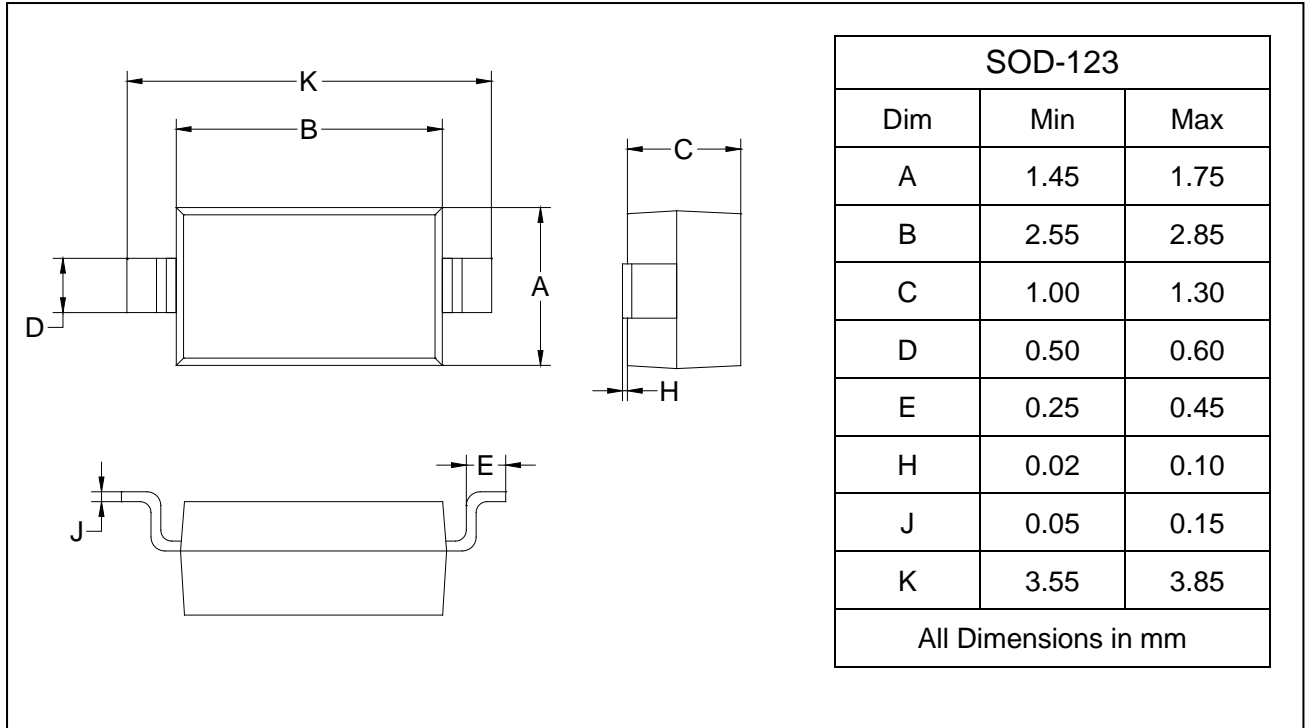
## Surface mount switching diode

## BAV19W/BAV20W

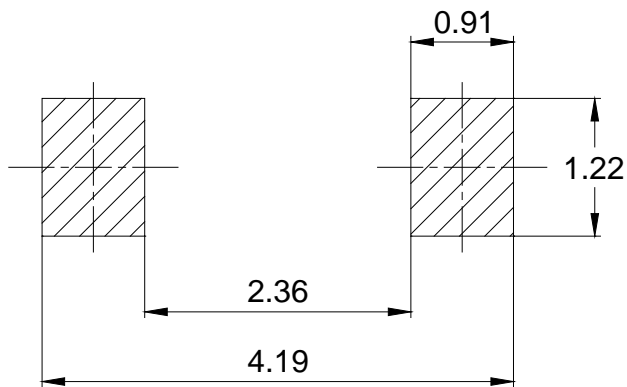
### PACKAGE OUTLINE

Plastic surface mounted package

SOD-123



### SOLDERING FOOTPRINT



Unit: mm

### PACKAGE INFORMATION

Device	Package	Shipping
BAV19W/BAV20W	SOD-123	3000pcs / Tape & Reel