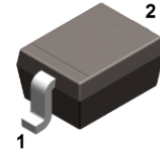
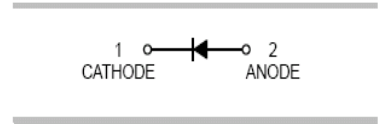




FEATURES

- Low turn-on voltage
- Fast switching
- This device is protected by a PN junction guard ring against excessive voltage, such as electrostatic discharge
- Ideal for precaution of MOS device ,steering ,biasing , and coupling diodes for fast switching and low logic level application
- Microminiature plastic package



SOD-323

APPLICATIONS

- High speed switching

ORDERING INFORMATION

Type No.	Marking	Package Code
SD106WS	S21	SOD-323

MAXIMUM RATING @ Ta=25°C unless otherwise specified

Parameter	Symbol	Limits	Unit
Non-Repetitive Peak reverse voltage	V_{RM}	30	V
Peak forward Current	I_{FM}	200	mA
Forward surge current @ $t_p=10ms$	I_{FSM}	1	A
Power dissipation	P_D	250	mW
Thermal resistance junction to ambient air	$R_{\theta JA}$	500	°C/W
Junction temperature	T_J	-55 to +150	°C
Storage temperature	T_{STG}	-65 to +150	°C

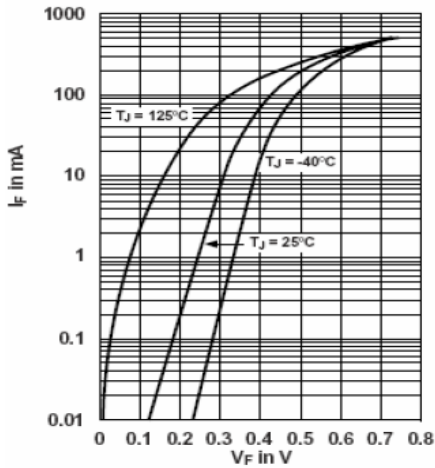


ELECTRICAL CHARACTERISTICS @ Ta=25°C unless otherwise specified

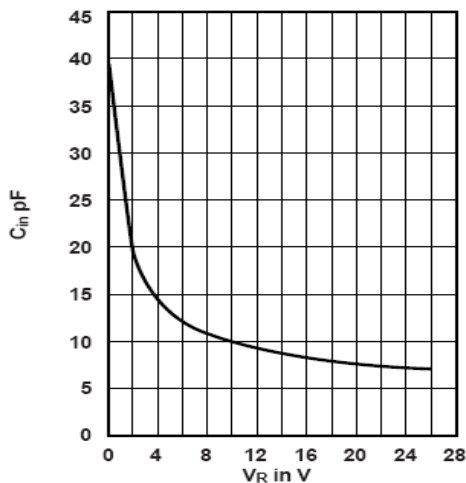
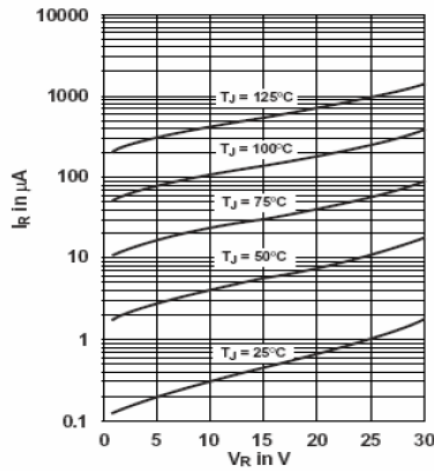
Parameter	Symbol	Min.	Typ.	Max.	Unit	Conditions
Reverse breakdown voltage	V_R	30			V	$I_R=100\mu A$
Forward voltage	V_F		260		mV	$I_F=2mA$
			320			$I_F=15mA$
			420			$I_F=100mA$
			490	550		$I_F=200mA$
Reverse current	I_R			5	μA	$V_R=30V$
Capacitance between terminals	C_T			15	pF	$V_R=10V, f=1MHz$

TYPICAL CHARACTERISTICS @ Ta=25°C unless otherwise specified

Forward Voltage Forward Current at Various Temperatures (Typical Values)



Typical Variation of Reverse Current at Various Temperatures

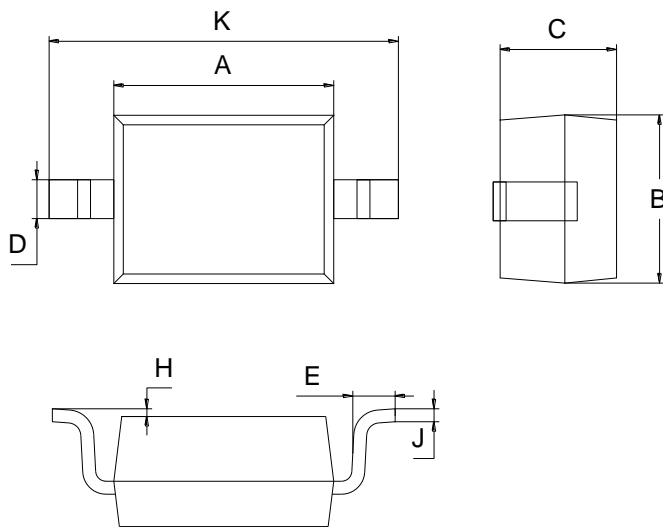




PACKAGE OUTLINE

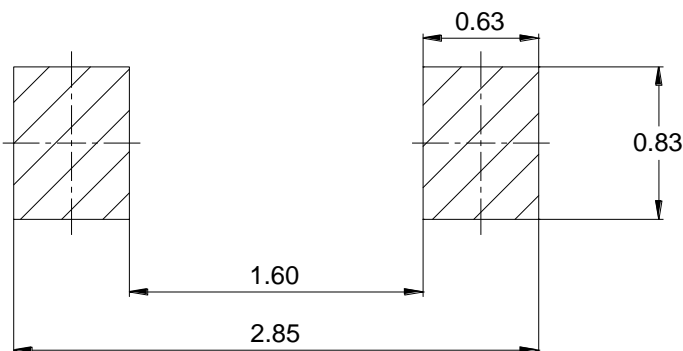
Plastic surface mounted package

SOD-323



SOD-323		
Dim	Min	Max
A	1.60	1.80
B	1.20	1.40
C	0.80	0.90
D	0.25	0.35
E	0.22	0.42
H	0.02	0.10
J	0.05	0.15
K	2.55	2.75
All Dimensions in mm		

SOLDERING FOOTPRINT



Unit: mm

PACKAGE INFORMATION

Device	Package	Shipping
SD106WS	SOD-323	3000 pcs / Tape & Reel