

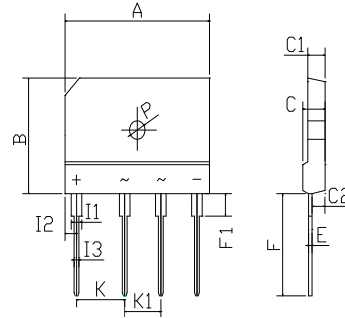


### FEATURES

- Rating to 1000V PRV
- Surge overload rating to 350 Amperes peak
- Ideal for printed circuit board
- Reliable low cost construction utilizing molded plastic technique results in inexpensive product
- Lead solderable per MIL-STD-202 method 208

### MECHANICAL DATA

- Polarity: Symbols molded on body
- Weight: 0.23 ounces, 6.6 grams
- Mounting position: Any



Dim	KBJ6	
	Min	Max
A	29.80	30.20
B	19.80	20.20
C	4.45	4.75
C1	3.45	3.75
C2	2.50	2.80
E	0.60	0.80
F	17.40	18.00
F1	3.60	4.20
I1	1.95	2.25
I2	2.25	2.55
I3	0.85	1.15
K	9.70	10.30
K1	7.20	7.80
P	Ø3.20Typical	
All Dimensions in mm		

### Maximum Ratings (@TA = 25°C unless otherwise specified)

Characteristic	Symbol	KBJ25AA	KBJ25BA	KBJ25DA	KBJ25GA	KBJ25JA	KBJ25KA	KBJ25MA	UNITS
Maximum recurrent peak reverse voltage	$V_{RRM}$	50	100	200	400	600	800	1000	V
Maximum RMS voltage	$V_{RMS}$	35	70	140	280	420	560	700	V
Maximum DC blocking voltage	$V_{DC}$	50	100	200	400	600	800	1000	V
Maximum average forward Output current @TA=25°C	$I_{F(AV)}$	25.0							A
Peak forward surge current 8.3ms single half-sine-wave superimposed on rated load	$I_{FSM}$	350.0							A
I <sup>2</sup> t Rating for fusing @Tj=25°C	$I^2t$	508							A <sup>2</sup> S

### Thermal Characteristics

Characteristic	Symbol	KBJ25AA	KBJ25BA	KBJ25DA	KBJ25GA	KBJ25JA	KBJ25KA	KBJ25MA	UNITS
Typical junction capacitance per element	$C_J$	114							p F
Typical thermal resistance	$R_{\theta JA}$ $R_{\theta JC}$	22 1.0							
Operating junction temperature range	$T_J$	- 55 ---- + 150							°C
Storage temperature range	$T_{STG}$	- 55 ---- + 150							°C

### Electrical Characteristics (@TA = 25°C unless otherwise specified)

Characteristic	Symbol	KBJ25AA	KBJ25BA	KBJ25DA	KBJ25GA	KBJ25JA	KBJ25KA	KBJ25MA	UNITS
Maximum instantaneous forward voltage @12.5A @25A	$V_F$	1.0 1.1							V
Maximum reverse current @TA=25°C at rated DC blocking voltage @TA=100°C	$I_R$	5.0 0.5							$\mu$ A mA



### TYPICAL CHARACTERISTIC CURVES

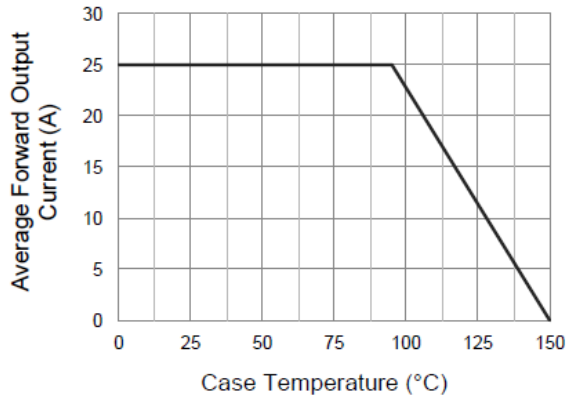


Fig.1 Forward Current Derating Curve

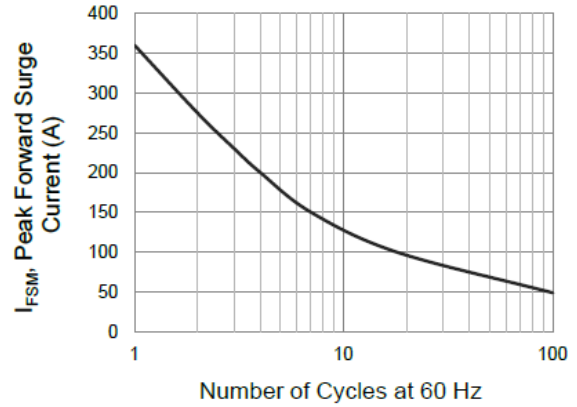


Fig.2 Maximum Forward Surge Current

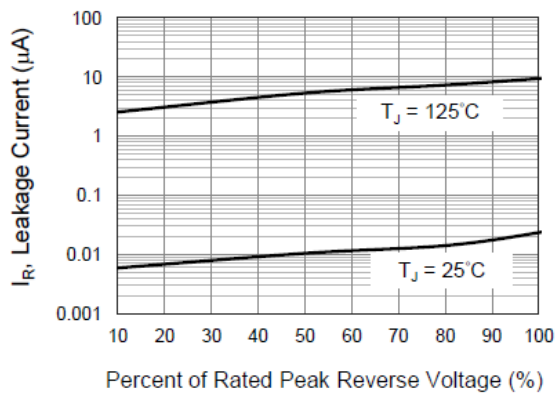


Fig.3 Typical Reverse Characteristics

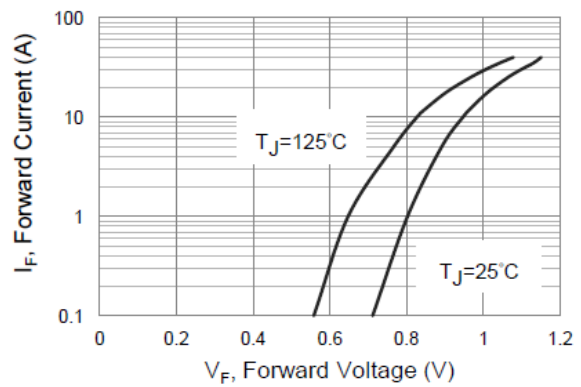


Fig.4 Typical Forward Characteristics

Device	Package	Shipping
KBJ25AA--KBJ25MA	KBJ6	250 Units/Box