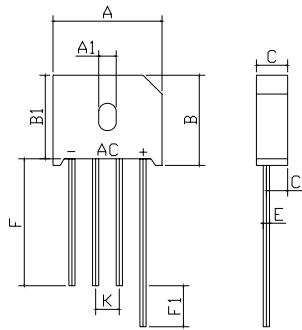




FEATURES

- Rating to 1000V PRV
- Surge overload rating to 220 Amperes peak
- Ideal for printed circuit board
- Reliable low cost construction utilizing molded plastic technique results in inexpensive product
- Lead solderable per MIL-STD-202 method 208



KBU		
Dim	Min	Max
A	22.80	23.20
A1	3.70	4.10
B	18.90	19.30
B1	17.60	18.00
C	6.55	6.85
C1	4.50	4.80
E	Ø1.20	Ø1.40
F	25min	
F1	4min	
K	4.70	5.30
All Dimensions in mm		

Maximum Ratings (@T_A = 25°C unless otherwise specified)

Characteristic	Symbol	KBU15A	KBU15B	KBU15D	KBU15G	KBU15J	KBU15K	KBU15M	UNITS
Maximum recurrent peak reverse voltage	V _{RRM}	50	100	200	400	600	800	1000	V
Maximum RMS voltage	V _{RMS}	35	70	140	280	420	560	700	V
Maximum DC blocking voltage	V _{DC}	50	100	200	400	600	800	1000	V
Maximum average forward Output current @T _A =25°C	I _{F(AV)}	15.0							A
Peak forward surge current 8.3ms single half-sine-wave superimposed on rated load	I _{FSM}	240							A
I ² t Rating for fusing @T _j =25°C	I ² t	239							A ² S

Thermal Characteristics

Characteristic	Symbol	KBU15A	KBU15B	KBU15D	KBU15G	KBU15J	KBU15K	KBU15M	UNITS
Typical thermal resistance	R _{θJA} R _{θJC}	18 3.0							°C/W
Operating junction temperature range	T _J	- 55 ---- + 150							°C
Storage temperature range	T _{STG}	- 55 ---- + 150							°C

Electrical Characteristics (@T_A = 25°C unless otherwise specified)

Characteristic	Symbol	KBU15A	KBU15B	KBU15D	KBU15G	KBU15J	KBU15K	KBU15M	UNITS
Maximum instantaneous forward voltage @7.5A @15.0A	V _F	1.0 1.1							V
Maximum reverse current @T _A =25°C at rated DC blocking voltage @T _A =100°C	I _R	5.0 0.5							μ A m A

RATINGS AND CHARACTERISTICS CURVES

($T_A=25^{\circ}\text{C}$ unless otherwise noted)

FIG1: I_o - T_c Curve

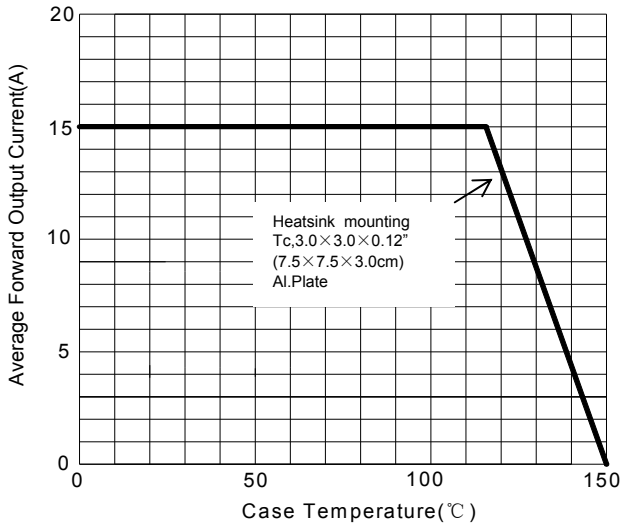


FIG2: Surge Forward Current Capability

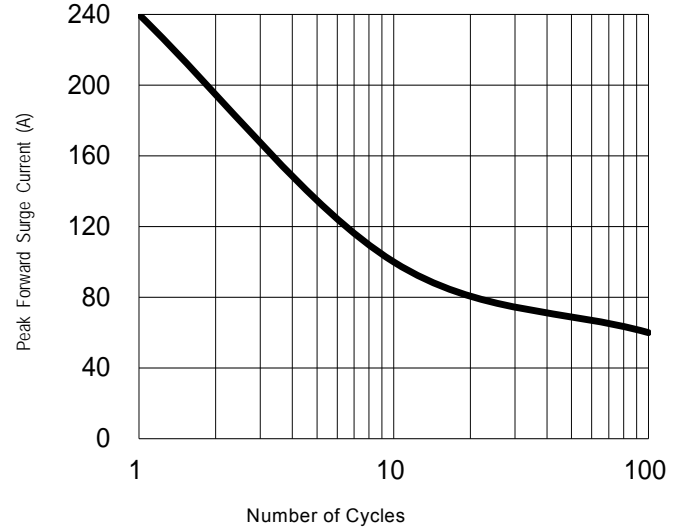


FIG3: Instantaneous Forward Voltage

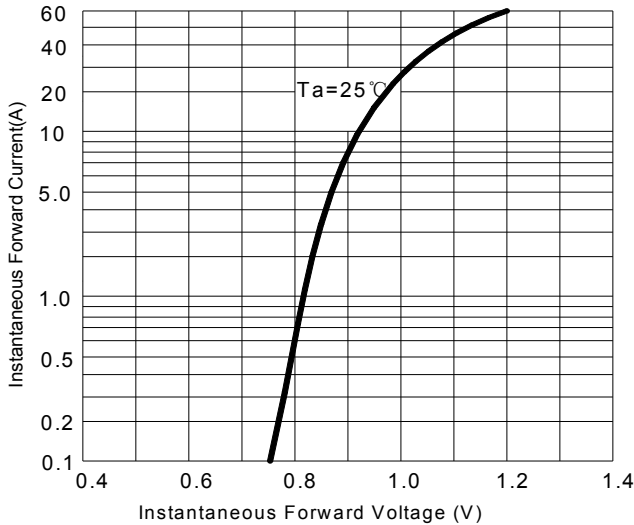
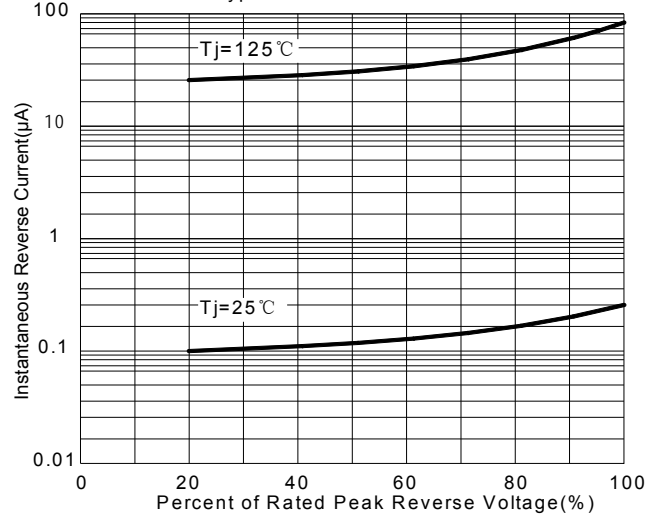


FIG4: Typical Reverse Characteristics



Device	Package	Shipping
KBU15A-KBU15M	KBU	400 Units/Box