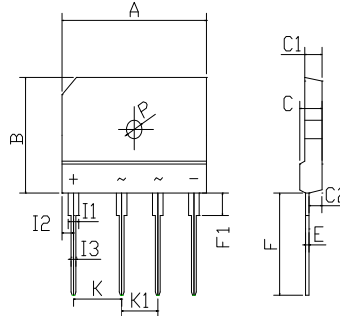


### FEATURES

- Rating to 1000V PRV
- Surge overload rating to 200 Amperes peak
- Ideal for printed circuit board
- Reliable low cost construction utilizing molded plastic technique results in inexpensive product
- Lead solderable per MIL-STD-202 method 208



KBJ6		
Dim	Min	Max
A	29.80	30.20
B	19.80	20.20
C	4.45	4.75
C1	3.45	3.75
C2	2.50	2.80
E	0.60	0.80
F	17.40	18.00
F1	3.60	4.20
I1	1.95	2.25
I2	2.25	2.55
I3	0.85	1.15
K	9.70	10.30
K1	7.20	7.80
P	Ø3.20 Typical	
All Dimensions in mm		

### MECHANICAL DATA

- Polarity: Symbols molded on body
- Weight: 0.23 ounces, 6.6 grams
- Mounting position: Any

### Maximum Ratings (@TA = 25°C unless otherwise specified)

Characteristic	Symbol	RBV15005	RBV1501	RBV1502	RBV1504	RBV1506	RBV1508	RBV1510	UNITS
Maximum recurrent peak reverse voltage	$V_{RRM}$	50	100	200	400	600	800	1000	V
Maximum RMS voltage	$V_{RMS}$	35	70	140	280	420	560	700	V
Maximum DC blocking voltage	$V_{DC}$	50	100	200	400	600	800	1000	V
Maximum average forward Output current @T <sub>c</sub> =55°C	$I_{F(AV)}$	15.0							A
Peak forward surge current 8.3ms single half-sine-wave superimposed on rated load	$I_{FSM}$	300							A
I <sup>2</sup> t Rating for fusing @T <sub>j</sub> =25°C	I <sup>2</sup> t	373.5							A <sup>2</sup> S

### Thermal Characteristics

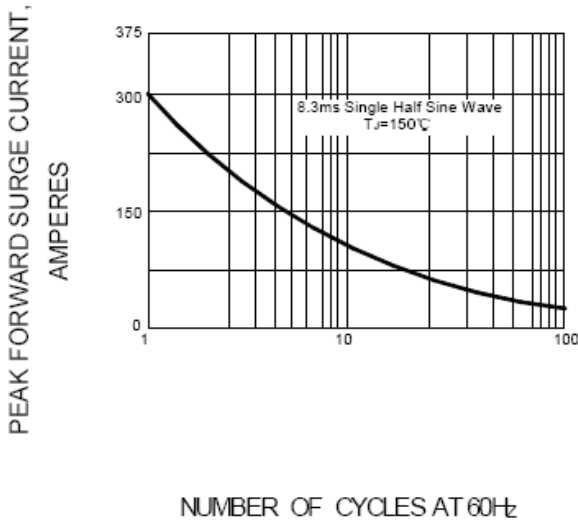
Characteristic	Symbol	RBV15005	RBV1501	RBV1502	RBV1504	RBV1506	RBV1508	RBV1510	UNITS
Typical junction capacitance per element	$C_J$	85							pF
Typical thermal resistance	$R_{\theta JA}$ $R_{\theta JC}$	22 1.4							°C/W
Operating junction temperature range	$T_J$	- 55 ---- + 150							°C
Storage temperature range	$T_{STG}$	- 55 ---- + 150							°C

### Electrical Characteristics (@TA = 25°C unless otherwise specified)

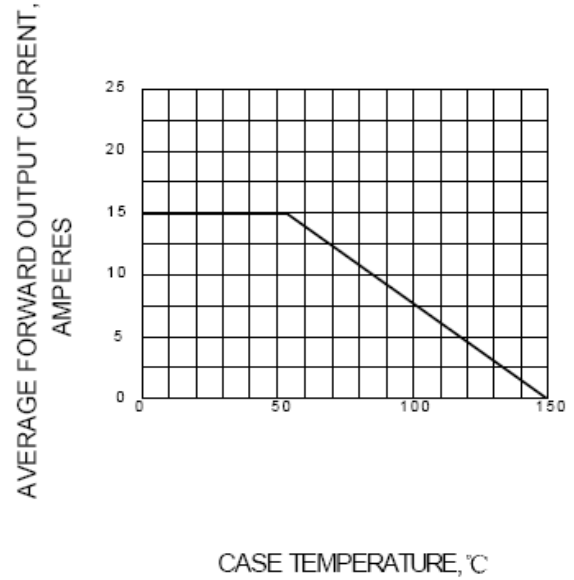
Characteristic	Symbol	RBV15005	RBV1501	RBV1502	RBV1504	RBV1506	RBV1508	RBV1510	UNITS
Maximum instantaneous forward voltage @7.5A @15A	$V_F$	1.0 1.1							V
Maximum reverse current @T <sub>A</sub> =25 °C at rated DC blocking voltage @T <sub>A</sub> =100°C	$I_R$	5.0 0.5							μA mA



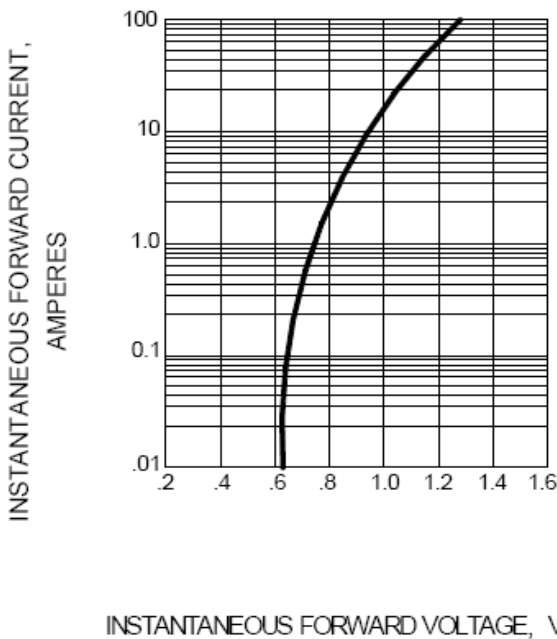
**FIG.1 – PEAK FORWARD SURGE CURRENT**



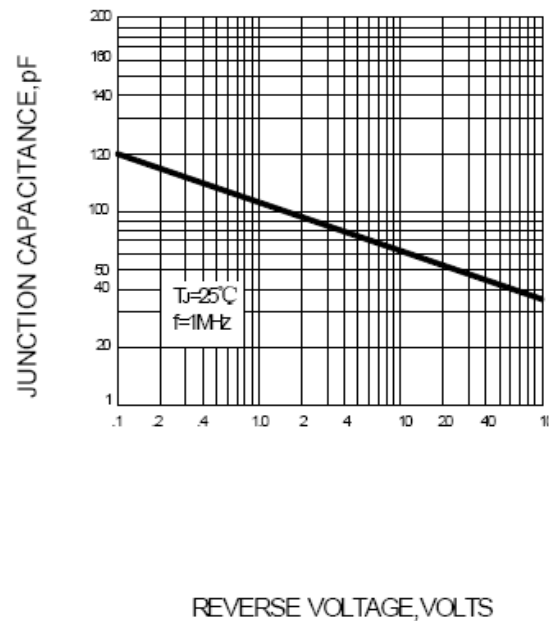
**FIG.2 – FORWARD DERATING CURVE**



**FIG.3 – TYPICAL FORWARD CHARACTERISTIC**



**FIG.4 – TYPICAL JUNCTION CAPACITANCE**



Device	Package	Shipping
RBV15005--RBV1510	KBJ6	250 Units/Box