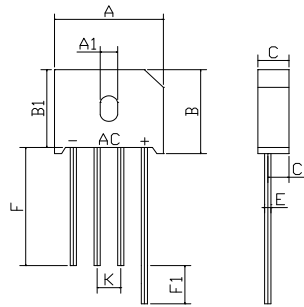


FEATURES

- Rating to 1000V PRV
- Surge overload rating to 150 Amperes peak
- Ideal for printed circuit board
- Reliable low cost construction utilizing molded plastic technique results in inexpensive product
- Lead solderable per MIL-STD-202 method 208



Dim	KBU	
	Min	Max
A	22.80	23.20
A1	3.70	4.10
B	18.90	19.30
B1	17.60	18.00
C	6.55	6.85
C1	4.50	4.80
E	Ø1.20	Ø1.40
F	25min	
F1	4min	
K	4.70	5.30

All Dimensions in mm

Maximum Ratings (@TA = 25°C unless otherwise specified)

Characteristic	Symbol	RS601	RS602	RS603	RS604	RS605	RS606	RS607	UNITS
Maximum recurrent peak reverse voltage	V_{RRM}	50	100	200	400	600	800	1000	V
Maximum RMS voltage	V_{RMS}	35	70	140	280	420	560	700	V
Maximum DC blocking voltage	V_{DC}	50	100	200	400	600	800	1000	V
Maximum average forward Output current @TA=50°C	$I_{F(AV)}$	6.0							A
Peak forward surge current 8.3ms single half-sine-wave superimposed on rated load	I_{FSM}	175							A
I ² t Rating for fusing @Tj=25 C	I^2t	127							A ² S
Typical Junction Capacitance	CJ	400							pF

Thermal Characteristics

Characteristic	Symbol	RS601	RS602	RS603	RS604	RS605	RS606	RS607	UNITS
Typical thermal resistance per leg	$R_{\theta JA}$	8.6							°C/W
	$R_{\theta JC}$	3.1							
Operating junction temperature range	T_J	- 55 ---- + 150							°C
Storage temperature range	T_{STG}	- 55 ---- + 150							°C

Electrical Characteristics (@TA = 25°C unless otherwise specified)

Characteristic	Symbol	RS601	RS602	RS603	RS604	RS605	RS606	RS607	UNITS
Maximum instantaneous forward voltage @3.0A	V_F	1.0							V
Maximum reverse current @TA=25°C at rated DC blocking voltage @TA=100°C	I_R	10							µ A m
		1.0							A



RATINGS AND CHARACTERISTICS CURVES

($T_A=25^\circ\text{C}$ unless otherwise noted)

FIG. 1 MAXIMUM DERATING CURVE FOR OUTPUT CURRENT

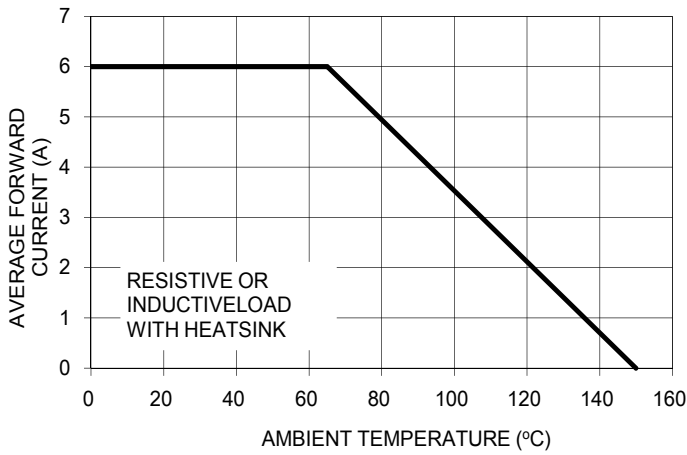


FIG. 2 MAXIMUM FORWARD SURGE CURRENT PER LEG

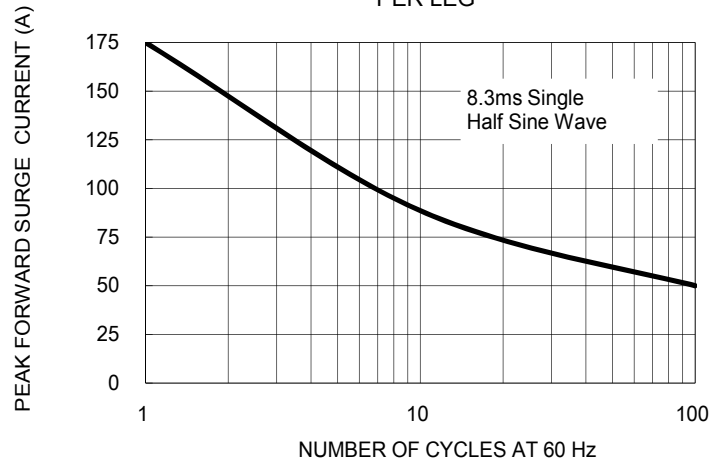


FIG. 3 TYPICAL REVERSE CHARACTERISTICS PER LEG

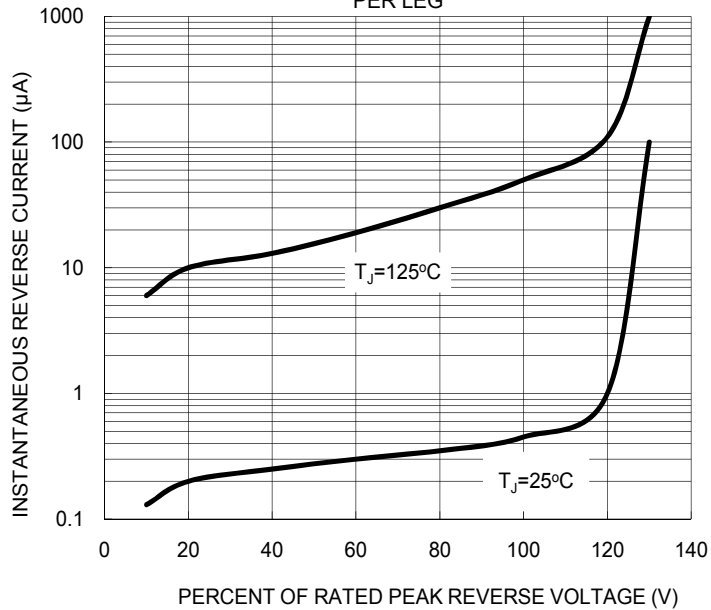
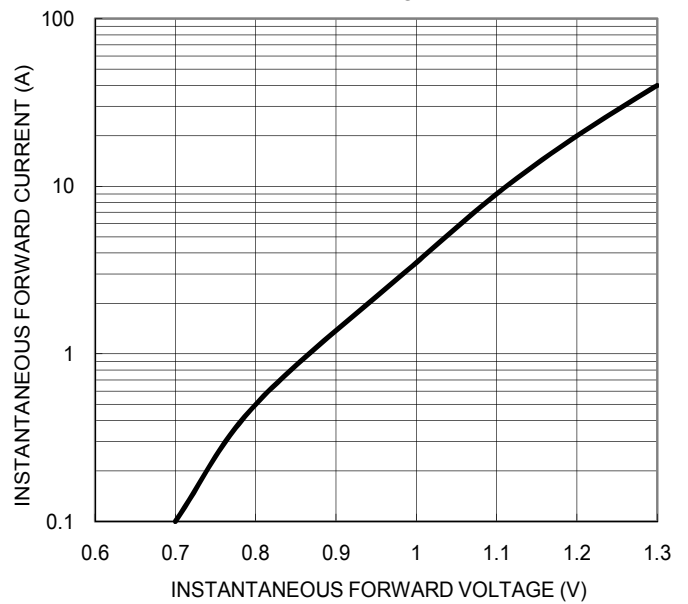


FIG. 4 TYPICAL FORWARD CHARACTERISTICS PER LEG



Device	Package	Shipping
RS601--RS607	KBU	400 Units/Box